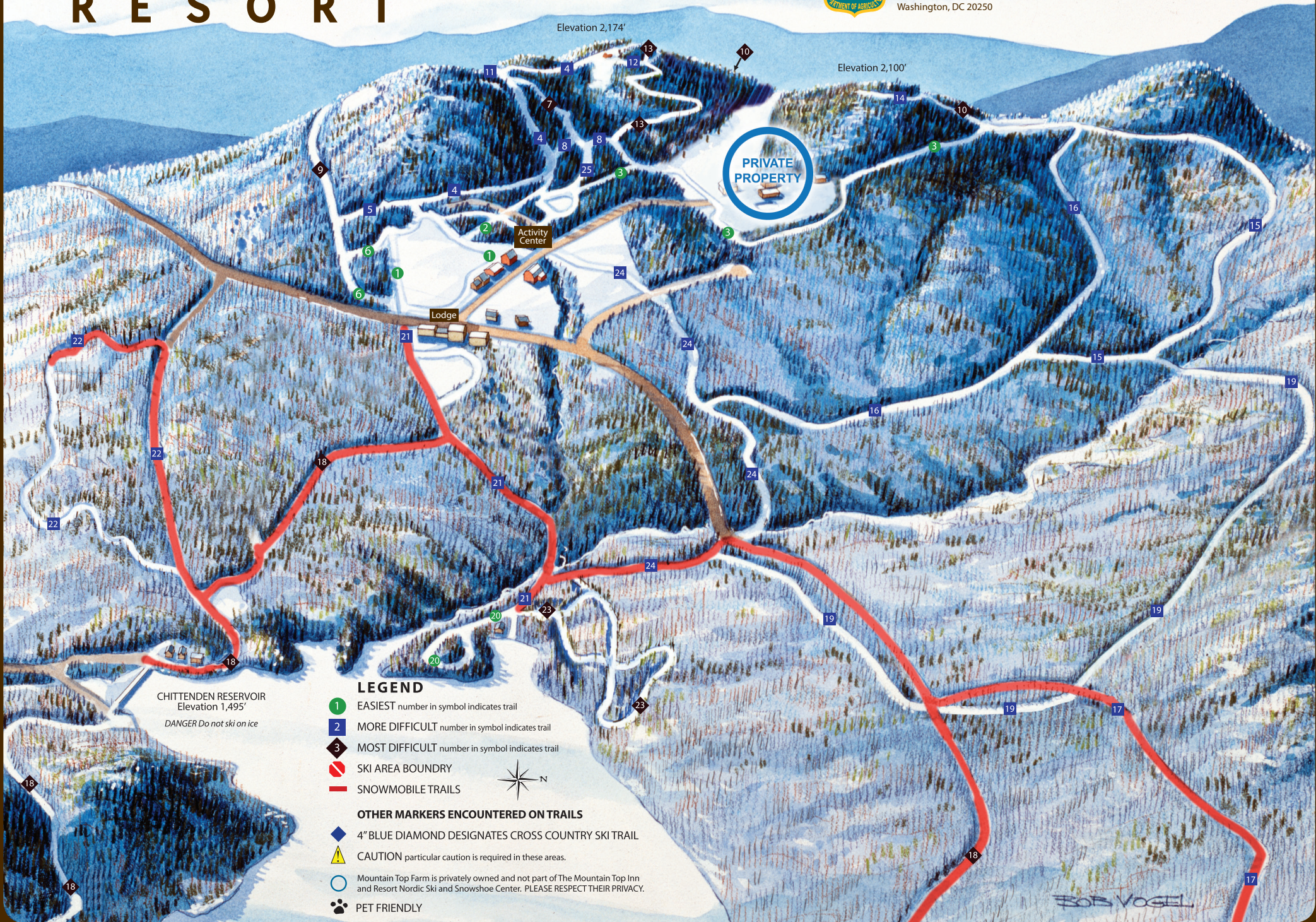


# MOUNTAIN TOP R E S O R T



Persons of any race, color, national origin, sex, age, or religion, or with any handicapping condition are welcome to use and enjoy all the facilities, programs, and services of the U.S. Department of Agriculture. Discrimination in any form is strictly against agency policy and should be reported to the Secretary of Agriculture, Washington, DC 20250



**LEGEND**

- 1 EASIEST number in symbol indicates trail
- 2 MORE DIFFICULT number in symbol indicates trail
- 3 MOST DIFFICULT number in symbol indicates trail
- SKI AREA BOUNDRY
- SNOWMOBILE TRAILS

**OTHER MARKERS ENCOUNTERED ON TRAILS**

- 4" BLUE DIAMOND DESIGNATES CROSS COUNTRY SKI TRAIL
- CAUTION particular caution is required in these areas.
- Mountain Top Farm is privately owned and not part of The Mountain Top Inn and Resort Nordic Ski and Snowshoe Center. PLEASE RESPECT THEIR PRIVACY.
- PET FRIENDLY

- 1 MORNING GLORY: 1 km
- 2 TURKEY TRACK: 1 km
- 3 INTERFIELD: 2.5 km
- 4 LOGGERHEAD: 2 km
- 5 HERBIE'S RUN: .5 km
- 6 LOOPER: .5 km
- 7 BLACK OUT: .5km
- 8 MOOSE TRACK: 1 km
- 9 CHALLENGER: 1.5 km
- 10 SUNSET: 2 km
- 11 BLUE SIDEWINDER: 1 km
- 12 RYAN'S RUN: .5 km
- 13 NOSE DIVE: 1 km
- 14 ORANGE DIVE: .5 km
- 15 LOST HORIZON: 2 km 🐾
- 16 DEER RUN: 2.5 km 🐾
- 17 GREEN BROOK TRAIL: 5 km 🐾
- 18 ROUND ROBIN: 20 km 🐾
- 19 BOONDOCKS: 4 km 🐾
- 20 SNOW GOOSE: 1 km 🐾
- 21 BOUNDER: 1.5 KM 🐾
- 22 BONNIE LASS: 1.5 km 🐾
- 23 EIGHT BALL: 1km 🐾
- 24 HEWITT BROOK RUN: 2.5 km 🐾
- 25 WALT WILK WAY: 0.25 km



# MOUNTAIN TOP RESORT

## Trail System

Easiest

More Difficult

Most Difficult

Secondary Road

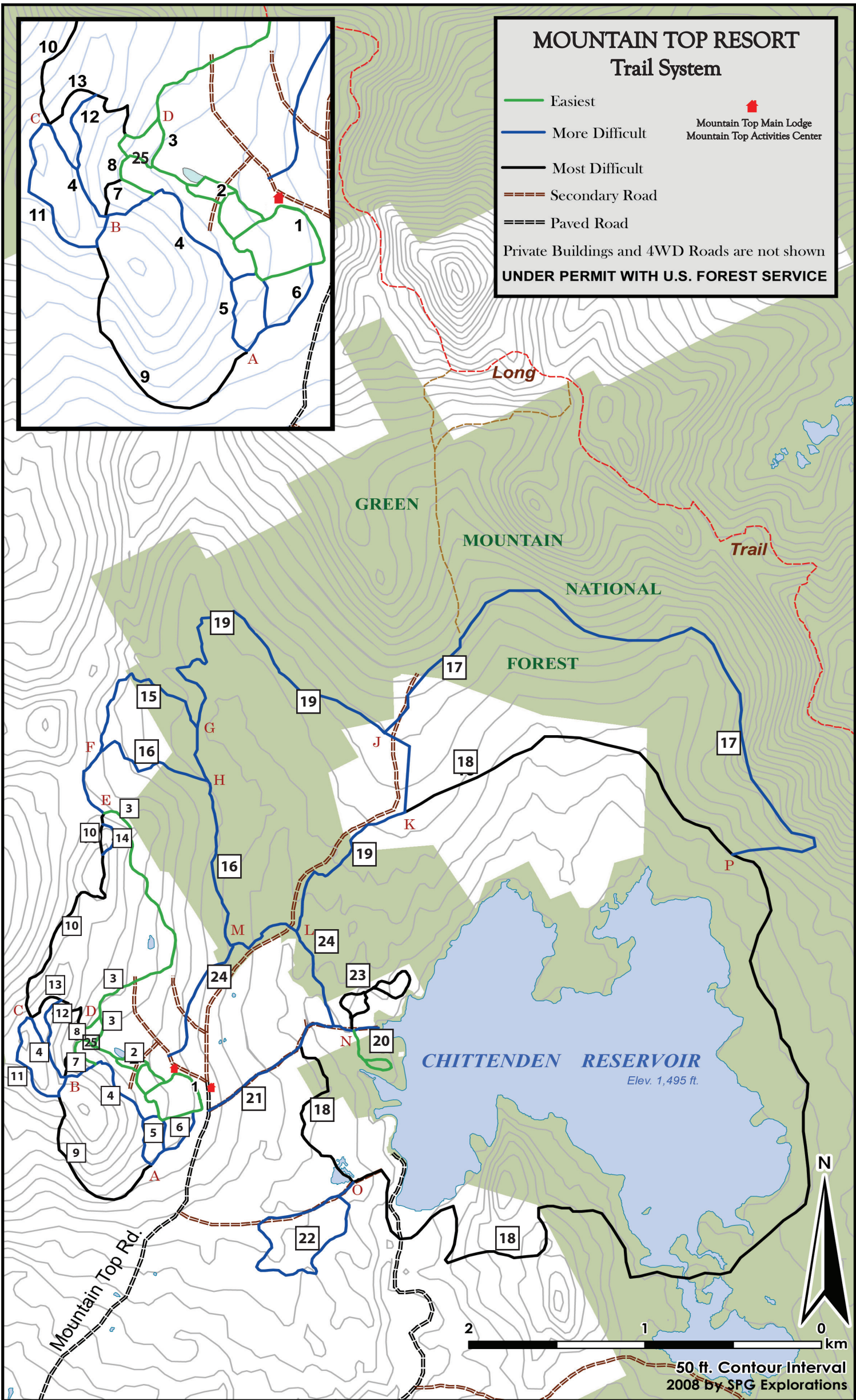
Paved Road

Mountain Top Main Lodge

Mountain Top Activities Center

Private Buildings and 4WD Roads are not shown

UNDER PERMIT WITH U.S. FOREST SERVICE



Persons of any race, color, national origin, sex, age, or religion, or with any handicapping condition are welcome to use and enjoy all the facilities, programs, and services of the U.S. Department of Agriculture. Discrimination in any form is strictly against agency policy and should be reported to the Secretary of Agriculture, Washington, DC 20250

Chittenden, VT | 802.483.2311  
www.mountaintopinn.com